

BELIVE **ACHIEVE** SUCEED



COLLEGE INFORMATION
PRINCIPAL RECRUITMENT



WELCOME

As Chairperson of the Board of Governors I would like to welcome you to Abbey Community College, and thank you for your interest in our advertised post of Principal.

The Board of Governors is seeking to appoint a dynamic Principal who has the vision and commitment to lead our vibrant learning community into the next phase of our journey.

Abbey Community College has been built on the culture of high expectation, self-belief and hard work, leading to achievement for all. We are student centred and pride ourselves with our safeguarding culture, ensuring that every child is valued and supported so that each child can reach their full potential. We are very proud of our dedicated staff and conscientious students who live out our school motto Believe, Achieve, Succeed.

We are at a very exciting juncture in the life of our school, as we await the commencement of our new build project. I hope that the additional information included here gives you a greater insight into our growing and developing school community.

Dr Hazel Edwards
Chair of Governors



BELIEVE
ACHIEVE
SUCCEED

Abbey Community College is a controlled, non-selective, co-educational, all-ability 11-19 school with an enrolment of up to 820.

MISSION STATEMENT

Our shared vision for **Abbey Community College** is to work together to build positive relationships and attitudes in a safe and secure environment, where every individual is valued, respected, cared for, supported and encouraged to achieve their full potential.

AIMS

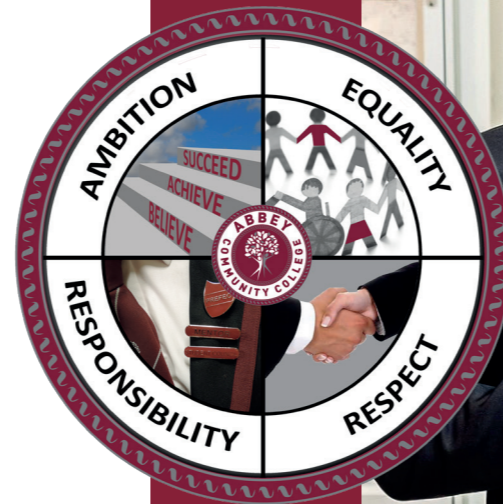
At **Abbey Community College** we aim to:

- Work together to build positive relationships to create a welcoming, secure and caring environment;
- Be respectful, trustworthy and hardworking;
- Develop a sense of pride and ownership in all aspects of school life;
- Work with parents to guide, support and facilitate the needs of every student;
- Provide a broad, balanced curriculum, tailored to the abilities and aspirations of all our students;
- Create opportunities for everyone to fulfil their potential.

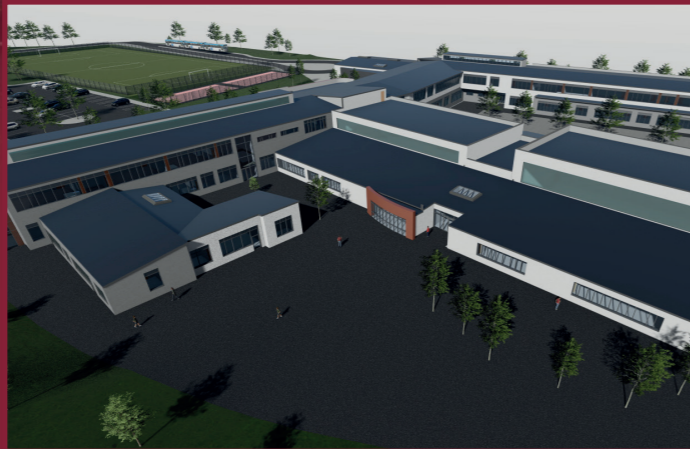
CORE VALUES

Our core values underpin all aspects of daily life at Abbey Community College and are the cornerstones of our student Rewards System.

AMBITION • EQUALITY • RESPECT • RESPONSIBILITY



NEW BUILD PROJECT





2015

NEW START

Abbey Community College opened in September 2015 following the amalgamation of Monkstown Community School and Newtownabbey Community High School with an aspirational school motto of 'Believe, Achieve, Succeed'

Our school is thriving and successful with a diverse student population of over 870 students, 68 teaching staff and 50 non teaching staff.

NEW BUILD

The Education Authority's proposals for a new post-primary school on the land at Three Mile Water Playing Fields, Doagh Road, were submitted to Antrim & Newtownabbey Borough Council for full planning approval in Spring 2022. Full planning permission was granted in June 2023.

Construction of our new building will commence in due course, with a lead time of 28 months.

2027



ENROLMENT TRENDS

	2016	2017	2018	2019	2020	2021	2022	2023
Year 8	93	127	152	154	154	153	157	158
Year 13	47	52	30	37	39	46	53	60
Year 14 Retention	43	42	45	22	32	33	37	41
School Enrolment	580	591	644	704	770	833	860	874

GCSE OUTCOMES

	2019	2020	2021	2022	2023
% students entered for 5+ GCSE or Equivalent	100	100	100	100	99
% students entered for 1 - 4 GCSE or equivalent	0	0	0	0	1
% students achieving 5+ A*-C at GCSE or equivalent	96	99	100	99	95
% students achieving 5+ A*-C at GCSE or equivalent (inc. Eng/Maths)	38	47	51	51	55
% students achieving 1-4 A*-C or equivalent	100	100	100	100	100
% students achieving 5+ A*-G or equivalent	100	99	100	100	99
% students achieving 1 - 4 A*-G or equivalent	0	1	0	0	1
% students achieving no qualifications	0	0	0	0	0

POST 16 OUTCOMES

Year 14 Outcomes	2019-20	2020-21	2021-22	2022-23
% pupils achieving 3+A*-C	90	69	39	28
% pupils achieving 3+A*-E	90	72	79	55
% pupils achieving 2+A*-C	95	81	93	52
% pupils achieving 2+A*-E	100	91	100	83
% pupils achieving 1+A*-E	100	100	100	100
% of all entries achieving C+	100	91	100	90





CURRICULUM

At **Abbey Community College**, our team of highly skilled and experienced staff create high quality learning experiences for students of all abilities across the curriculum, which motivates them towards success.

KEY STAGE 3

At Key Stage 3 all students have an equal opportunity to follow a challenging and exciting curriculum which meets the requirements of the Northern Ireland Curriculum. Subjects offered:

Art & Design, Drama, English, Games, Geography, History, Home Economics, ICT, LLW, Mathematics, Music, PE, Religious Education, Science, Spanish & Technology & Design.

KEY STAGE 4

A wide range of academic and vocational subjects are offered to meet the aspirations and abilities of all students through a combination of GCSE and Level 2 qualifications. Where appropriate, students can have the opportunity to enter exams in their native language. Subjects offered:

Art & Design, Business Communication Systems, Business Studies, Careers, Child Care, Creative iMedia, Engineering, English Language, English Literature, Geography, Health & Social Care, History, Hospitality, ICT, LLW, Mathematics, Media Studies, Performing Arts, PE, Prince's Trust, Public Services, Religious Education, Science, Spanish, Sports Studies, Statistics, Technology & Design & Travel & Tourism.

POST 16

Post 16 students have the opportunity to study a variety of academic and vocational courses at A Level and Level 3, linked to their future aspirations and in response to an ever changing society and economy.

Each student is provided with a College laptop to support their learning in school and at home. Subjects offered:

Applied Science, Art & Design, Business Studies, Childcare, Construction & The Built Environment, English Literature, Health & Social Care, ICT, Life & Health Science, Media Studies, Public Services, Sport & Leisure Studies & Travel & Tourism.



SPECIAL EDUCATIONAL NEEDS

There are currently 205 students on the SEN register in the following categories:

Stage 1: 81

Stage 2: 29

Stage 3: 95

To further meet the individual needs of students, the following specialist provision is available in partnership with the Education Authority;

- Specialist Provision for Learning
- Specialist Provision for Autism

In addition the specialist provisions to support our students, we have Link Classes. These classes provide small group teaching linked to the individual Statement of Special Educational Need.

FREE SCHOOL MEALS

Based on the latest census data, 49% of our college population are entitled to Free School Meals.

PASTORAL CARE

As an inclusive, caring and child centred school, we strive to enhance and support the personal, social and academic development of each individual student in all aspects of College life. All staff play an important role, both within and beyond the classroom, ensuring that all students are given every opportunity to reach their full potential regardless of ability or background.

A senior member of staff, Mrs C. McNaghten is the Designated Teacher responsible for Child Protection and Safeguarding. She is supported in the role by Deputy Designated Staff, Mr D. Laney, Mr S. Smyth, Mr D. Sloan (College Social Worker), Heads of Year and the Principal. We also have a dedicated School Nurse on site including access to counselling and external agencies.

EXTRA-CURRICULAR ACTIVITIES

At **Abbey Community College** the educational experience of our young people is not just confined to the classroom or the normal school day. Before school, at lunchtime and after the school day ends, students have the opportunity to become involved in a variety of sporting and other activities which give valuable personal, academic and social development experiences.

Bridge Youth Club: This facility operates for local young people of all ages in the evenings over the course of the week creating additional opportunities for personal and social development and leisure activities.

Career Ready: This is a UK wide programme in which our Year 13 students are given the opportunity to participate in a comprehensive mentoring programme with key business representatives across many sectors.

TRIPS & VISITS

Throughout the year a range of trips are organised to support key aspects of learning and create opportunities for our students. Recent school trips include the ski trip to Austria, a visit to Belgium, football trips to Liverpool and the Health & Social Care visit to Prague.



Chen a Wanda: Over the past seven years a particularly exciting development is the unique opportunity for Post 16 students at Abbey Community College to apply for a summer placement working as a Camp Counsellor at a boys and girls residential sleepaway camp in the USA.

This gives our young people the experience of a lifetime, to live abroad, meet new friends and develop their leadership, communication, and organisational skills.

A SCHOOL IN THE COMMUNITY

As 'a school at the heart of the community with the community at the heart of the school'

Abbey Community College works in partnership with parents, local education providers, business and community based groups to build opportunities for community education, sports participation and family support.

Positive relationships with local primary schools through THRiVE Rathcoole and Monkstown, have created opportunities for collaboration, staff development and shared learning experiences. Strategic partnerships have been developed with a variety of local business and community groups to support learning, achievement and personal development in a variety of ways.



STAY CONNECTED WITH ABBEY



2024 Prospectus



College Website



Year 8 Microsite



Abbey News





ABBEY COMMUNITY COLLEGE

100 Bridge Road
Newtownabbey, BT37 0EA

Tel: **028 9086 7431** Fax: **028 9085 4945**
info@abbeycommunitycollege.newtownabbey.ni.sch.uk